

ENTRON™

EN6001-BSW-300S+

Part # 10-34-0B-00-01-L0-0A-00



Heat Adjust on the fly during the anneal sequence.

KEY SPECIFICATION

- Size **S+** control cabinet ($W=13'' \times H = 9'' \times D = 18''$)
- EN6001-v2-BSW Timer.
- 24 Volt DC Power supply.
- 24 Volt DC users connections.
- 300 Amp SCR (*Air cooled*).
- Onboard **Rotary Heat Adjust** switch (*During Anneal*).
- Firmware updates via USB.
- Control wiring diagram (421537E).
- Users connection wiring diagram (421537E-P2).

Simple user friendly Sequence.

- *Single programming screen.*

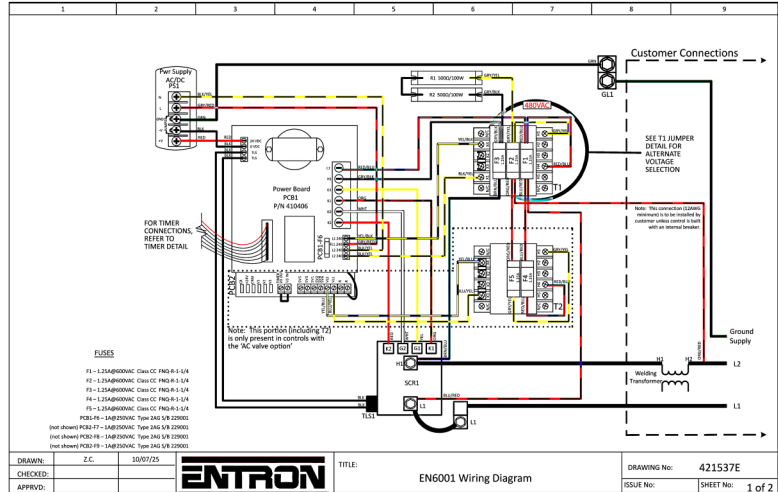
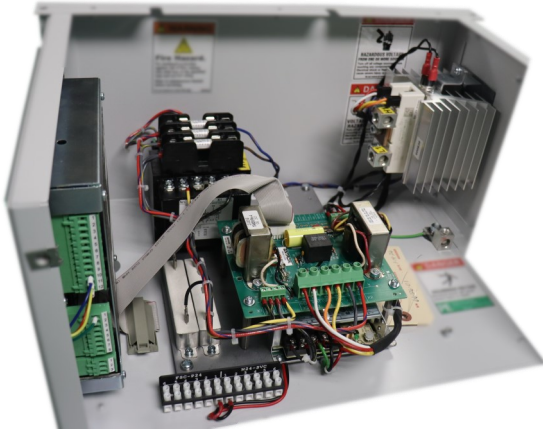
Edit Schedule	
Weld	Heat = 90 %
Post Heat	Time = 20 Cyc
Post Heat	Heat = 45 %
Anneal 1	Time = 10 Sec
Anneal 1	Heat = 90 %
Anneal 2	Time = 15 Sec
	Heat Pulse = 5 Cyc
	Cool Pulse = 5 Cyc
Anneal 2	Heat = 35 %

User Friendly Sequence

Input 1 (FS1)—Start Flash

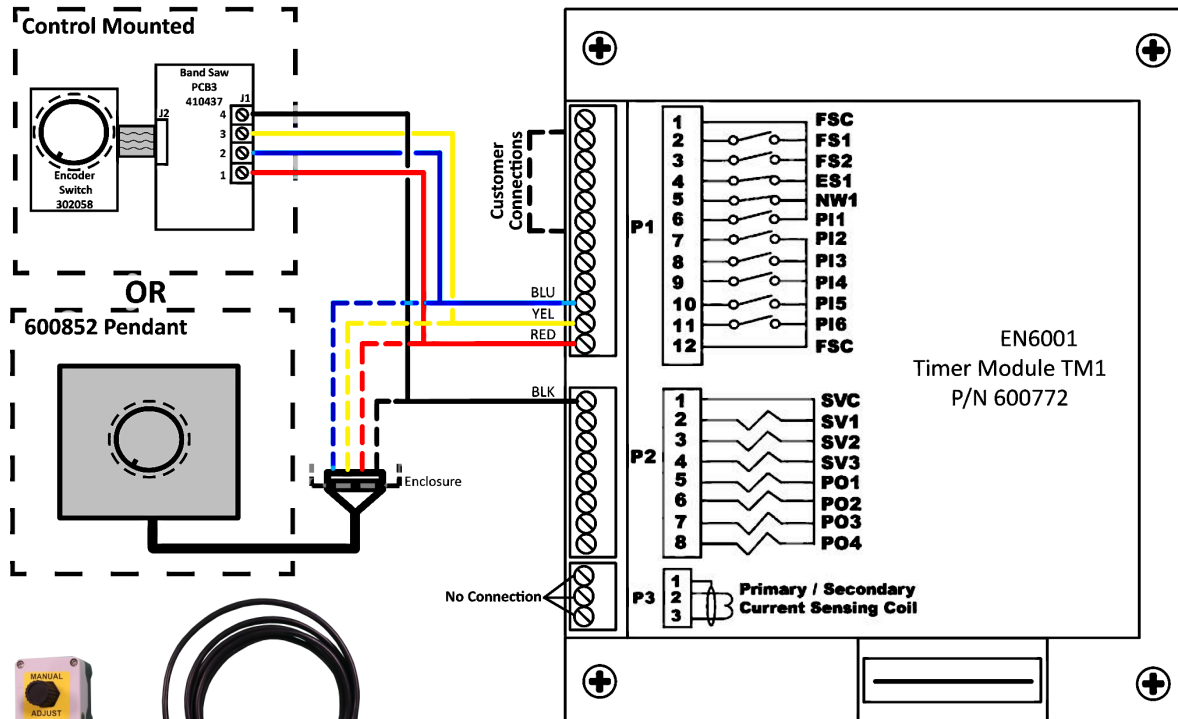


Input 2 (FS2)—Anneal 1 + Anneal 2



Band Saw Welder Option

TIMER DETAIL



Please Note:- Part # 600852 can be used with :-

- Desc:- EN6001-BSW-3000+ /SKT
- Part # 10-34-0B-00-01-L0-0B-00

Part # 600852—EN6001 BANDSAW HEAT ADJUST PENDANT



ENTRON Controls LLC. USA
Tel: 864-416-0190
Email: customerservice@entroncontrols.com

700301-1